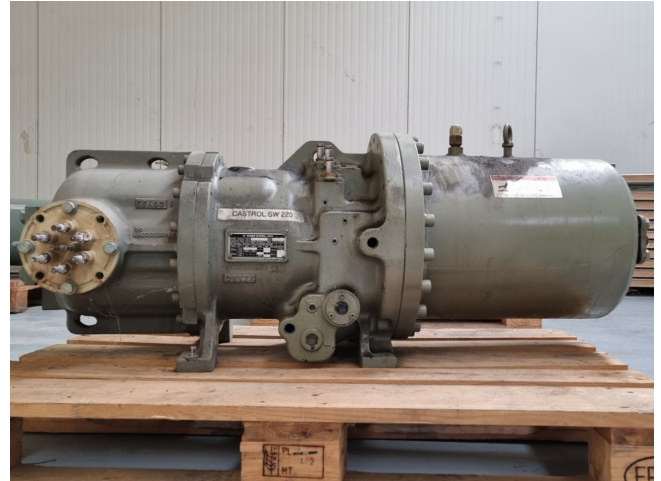


Kobe Steel KS10LHA

Specifications

Brand	Kobe Steel
Type	KS10LHA
Refrigerant	Freon
Sight Glass	✓
m3 / h	50 Hz - 218 m ³ /h / 60 Hz - 263 m ³ /h
Remarks	Y.o.b. 2001
Remarks	We only offer the compressor overhauled and we can offer a fast delivery time.
Weight in kg.	470 kg
Sizes	1300x450x500 mm (LxWxH)
Stock	1



Description

Used Kobe Steel KS10LHA

Overhauled Kobe Steel KS10LHA semi-hermetic screw compressor on Freon with a sight glass. The compressor has a displacement of 218 m³/h at 50 Hz & 263 m³/h at 60 Hz. We only offer the compressor overhauled and we can offer a fast delivery time. Please contact us for more information!

*Why choose for HOSBV? We are not only the largest used refrigeration specialist in Europe, but also, we deliver all equipment including an extensive test, warranty, and industrial cleaning. *Optional we can also perform a new paint job and arrange the logistics.

